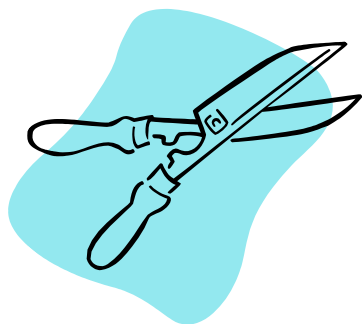


On-Farm Fruit Tree Training and Pruning Demonstration



Thursday, February 25, 2016

1 PM



Meet at Orchard :
Bee Sweet Orchards
2229 Pannel Rd
Reidsville, NC 27320

Come see how to correctly prune and train fruit trees!!!!

Dr. Michael Parker from NCSU will be doing the pruning demonstration on how to prune and train a peach and apple fruit trees for strong trees and maximum fruit yields.

Contact Kathryn Holmes, Rockingham County Cooperative Extension Agent at kathryn_holmes@ncsu.edu and 342-8230 or John Ivey, Guilford County Cooperative Extension Agent at john_ivey@ncsu.edu and 336-641-2416 for more information.

Persons with disabilities and persons with limited English proficiency may request accommodations to participate by contacting William Starader, Rockingham County Extension Director, by phone: 336-342-8230 or email: william_tstrader@ncsu.edu or fax: 336-342-8242, or in person at the Rockingham County Extension Office at least 10 days prior to the event. North Carolina State University and North Carolina A&T State University commit themselves to positive action to secure equal opportunity regardless of race, color, creed, national origin, religion, sex, age, veteran status, or disability. In addition, the two Universities welcome all persons without regard to sexual orientation.

NC State University
A&T State University
**COOPERATIVE
EXTENSION**

Empowering People • Providing Solutions