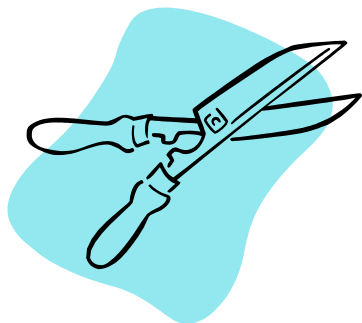


Fruit and Nut Tree Pruning Demonstration



Tuesday, March 11, 2014

1 PM

Larry Baker's Orchard
180 Benton Rd
Reidsville, NC 27320



Come see how to correctly prune and train fruit and nut trees!!!!

Dr. Michael Parker from NCSU will be doing the pruning demonstration on how to prune and train a variety of fruit and nut trees for strong trees and maximum fruit yields.

Call Kathryn Holmes, Rockingham County Cooperative Extension Agent at 342-8230 for more information.



Persons with disabilities and persons with limited English proficiency may request accommodations to participate by contacting Mark Tucker, County Extension Director, by phone: 336-342-8230 or email: mark_tucker@ncsu.edu or fax: 336-342-8242, or in person at the Rockingham County Extension Office at least 10 days prior to the event. North Carolina State University and North Carolina A&T State University commit themselves to positive action to secure equal opportunity regardless of race, color, creed, national origin, religion, sex, age, veteran status, or disability. In addition, the two Universities welcome all persons without regard to sexual orientation.