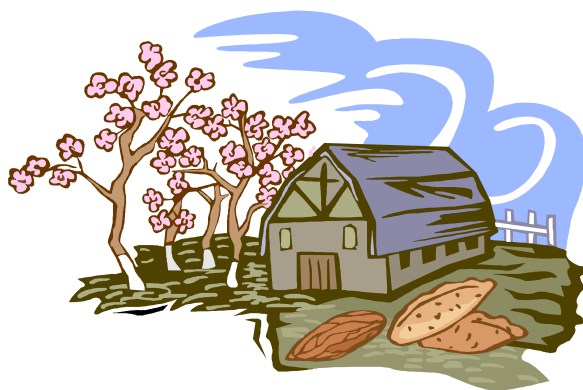


Tips and Strategies for Growing Fruitful Pecans

Rockingham County Agricultural Center
525 Hwy 65
Reidsville, NC 27320

Tuesday, March 11, 2014

Starts 6:30pm



Dr. Michael Parker,
NCSU Extension Tree Fruit Specialist will be the speaker.

Topics: Tree Establishment
Pollination
Nutrition Management
Insects and Diseases
Harvest

Call Kathryn Holmes at Rockingham County NCCE 336-342-8230 to register. This program is targeted for people with 2 Pecans trees in their yard to those with many trees.

North Carolina State University and North Carolina A&T State University commit themselves to positive action to secure equal opportunity regardless of race, color, creed, national origin, religion, sex, age, veteran status, or disability. In addition, the two Universities welcome all persons without regard to sexual orientation.

Persons with disabilities and persons with limited English proficiency may request accommodations to participate by contacting Mark Tucker, County Extension Director, by phone: 336-342-8230 or email: mark_tucker@ncsu.edu or fax: 336-342-8242, or in person at the Rockingham County Extension Office at least 10 days prior to the event.